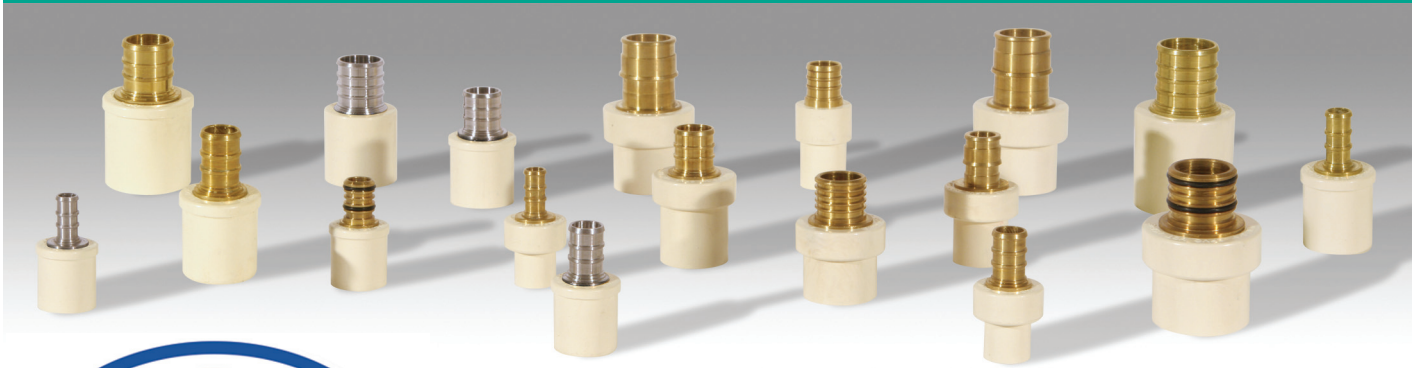


PlatinumXCELL® PEX FITTINGS & ADAPTORS



KBI® ANNOUNCES THE RELEASE OF CPVC X PEX TRANSITION FITTINGS

KBI® is pleased to introduce an innovative solution for transitioning from CPVC to PEX tubing in a plumbing system. Through the use of a unique over-mold design, KBI's CPVC X PEX transition fittings allow for a one piece connection between CPVC and PEX tubing in a plumbing system. KBI's CTS CPVC X PEX transition fittings are ideally suited for hot and cold water distribution systems in industrial, residential and commercial structures, as well as recreational vehicles, modular and mobile homes.

Available in sizes from 1/2" Through 1-1/2"

KBI's line of CPVC-2-PEX™ and StainPro™ transition fittings are offered in a variety of configurations in sizes 1/2" through 1 1/2" with either spigot or hub inlets for ease of installation.

Exceptional Corrosion Resistance

CPVC-2-PEX™ and StainPro™ transition fittings are corrosion resistant and will provide many years of maintenance-free service and extended life under most operating conditions.

Energy Savings

Low heat conductivity for CPVC and PEX systems minimizes heat loss in hot water systems.

Higher Flow Capacity

Smooth interior walls result in lower pressure loss and higher volume than conventional all-metal systems.

Lower Installation Costs

CPVC and PEX systems have lower material costs than metallic systems. This, combined with lighter weight and ease of installation, can substantially reduce installation costs.

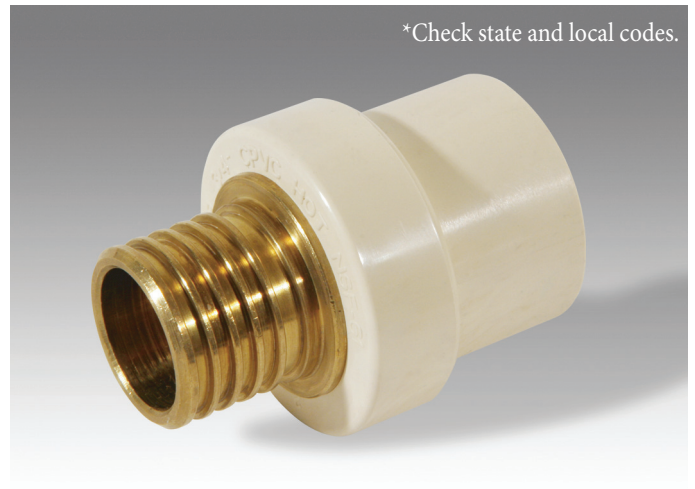
Suitable for Commercial Hot Water

CPVC-2-PEX™ and StainPro™ fittings can handle fluids at service temperatures up to 180°F (82°C).

Conforms to ASTM D Standards

CPVC-2-PEX™ and StainPro™ meet specifications for Chlorinated Polyvinyl Chloride (CPVC) Plastic Hot and Cold Water Distribution Systems (ASTM D 2846)

*Check state and local codes.



Sample Engineering Specifications

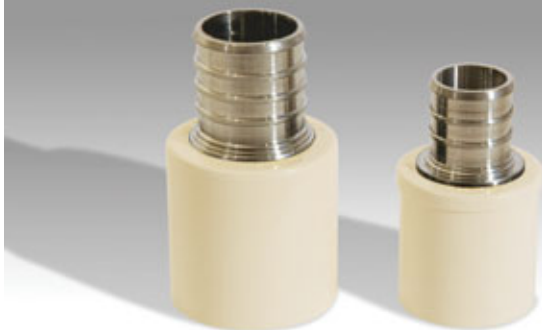
All Fittings shall be Copper-Tube-Size constructed from CPVC Type IV Cell Classification 23447. All fittings shall be certified for potable water use by the NSF International (NSF). All fittings shall be produced in strict compliance to ASTM D 2846, as manufactured by KBI's Manufacturing Company.

All thermoplastic ball valves shall be Copper-Tube-Size sealed unit type constructed from CPVC Type IV Cell Classification 23447. All O-rings shall be EPDM. All valves shall be listed for potable water service by the NSF International (NSF). All valves shall be pressure rated to 100 psi for water at 180°F, as manufactured by KBI's Manufacturing Company.

www.kbico.com

PEX TRANSITION ADAPTERS

- New technology allows KBI's Transition Adapters to surpass industry pressure requirements



Valves calculated from valve laying length, based on derivative of Hazen-Williams equation with surface roughness factor of C=150.

Special StainPro™ (Stainless) Transition Fittings

KBI's StainPro™ (Stainless) Fittings provide all the benefits of brass fittings with the added benefits of increased corrosion resistance and lead free composition.

Applications

KBI's PEX x CPVC fittings are manufactured from chlorinated polyvinyl chloride (CPVC) for use with SDR-11 piping systems of CTS outside diameter in hot and cold water distribution systems. Check state and local codes for application and restrictions.

Testing

Once the system has been installed and allowed to cure properly, the system shall be tested in accordance with application code requirements. When testing with water (*hydrostatic testing*), the system must be slowly filled with water and the air bled from the highest and furthest points in the system before test pressure is applied. Failure to do so can cause damage to the piping system and could be harmful to the job site personnel should failure occur. If a leak is found, the affected product must be cut out and discarded. A new section can be installed using couplings or other approved means.

Fitting Configurations

A variety of standard, reducing, specialty and transition fitting configurations are available:

Working Pressure

KBI's CPVC CTS fittings have continuous working pressure ratings of 100 psi at 180°F and 150 psi at 73°F.

Conformance Standards

KBI's CPVC CTS fittings conform to ASTM D 2846 Specifications for Chlorinated Poly (Vinyl Chloride) (CPVC) Plastic Hot and Cold Water Distribution Systems.

Product Certification

KBI's CPVC X PEX transition adapters are tested to ASTM D 2846 for use in Hot and Cold Water Distribution Systems, and for safe use in potable water systems under NSF Standard 61.



WARNING: THE USE OF COMPRESSED AIR OR GASSES FOR TESTING MAY RESULT IN SYSTEM DAMAGE OR SERIOUS OR FATAL BODILY INJURY.



*Made with Pride in the U.S.A.
The Choice of Professionals*

King Bros. Industries

29101 The Old Road, Valencia, CA 91355

800-325-9468 • Fax: 661-257-4320

www.kbico.com